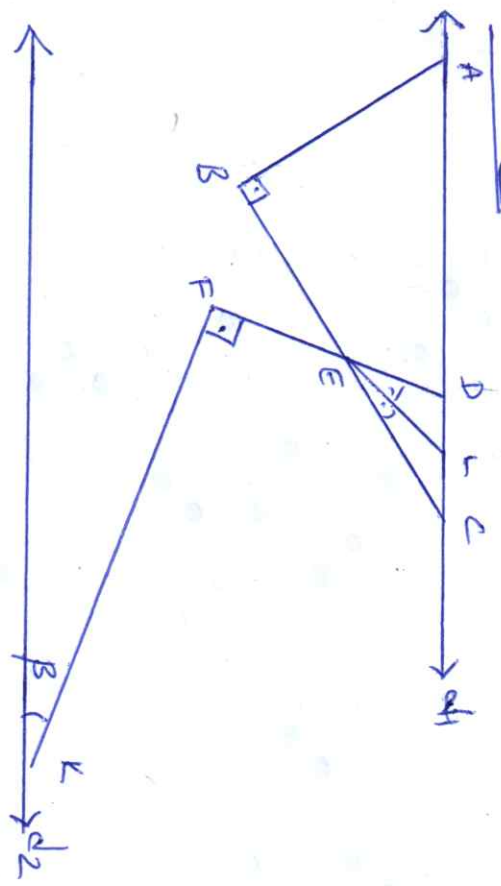
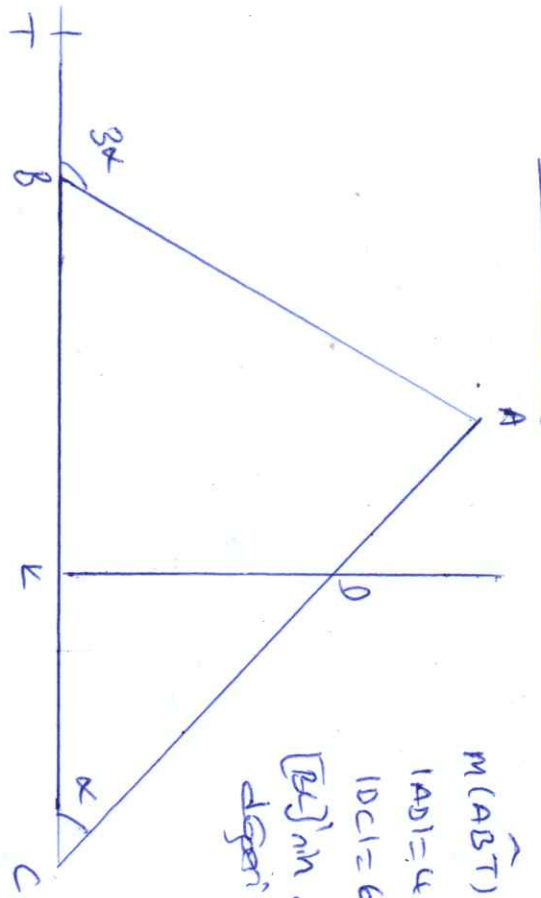


SORU 1:



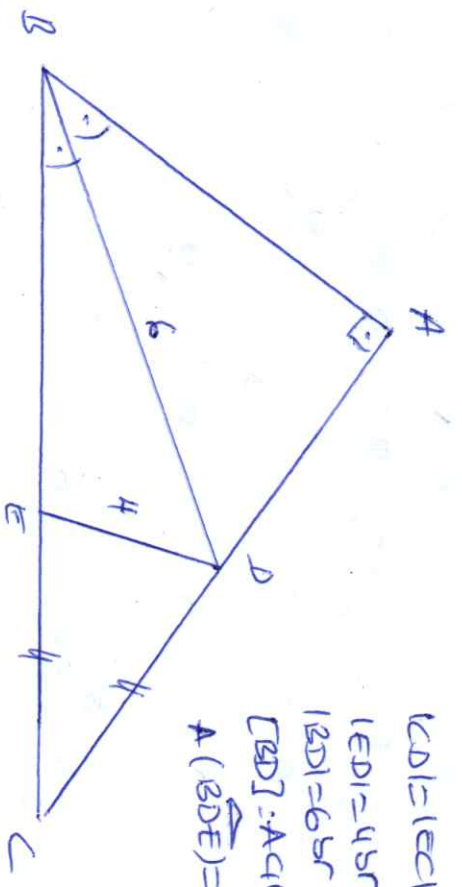
$[AB] \perp [BC]$   $\alpha + \beta = 110$   
 $[DE] \perp [FE]$   $m(\widehat{AEC}) = ?$   
 $d \parallel d_2$

SORU 2:



$m(\widehat{ABT}) = 3 \cdot m(\widehat{ACB})$   
 $|AD| = 4 \text{ br}$   
 $|DC| = 6 \text{ br}$   
 $[BT]$ 'nin en büyük kenarını  
 diğer kenarını?

SORU 3:



$|CD| = |EC|$   
 $|ED| = 4 \text{ br}$   
 $|BD| = 6 \text{ br}$   
 $[BD] : A(\widehat{BDE}) = ?$