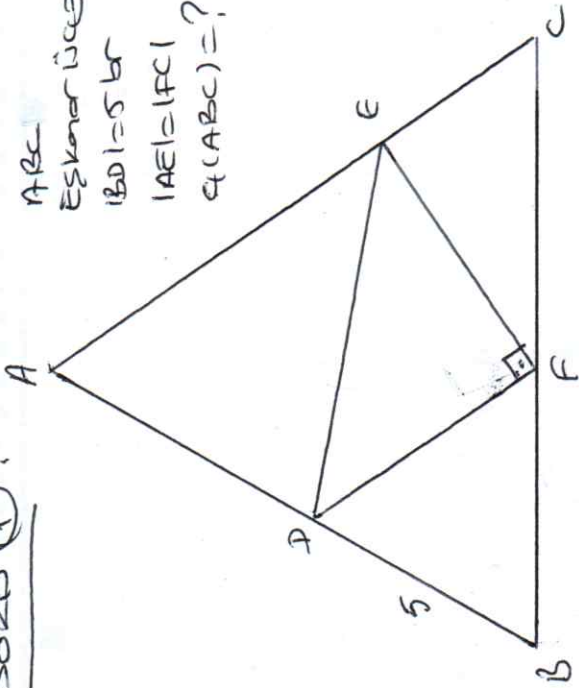


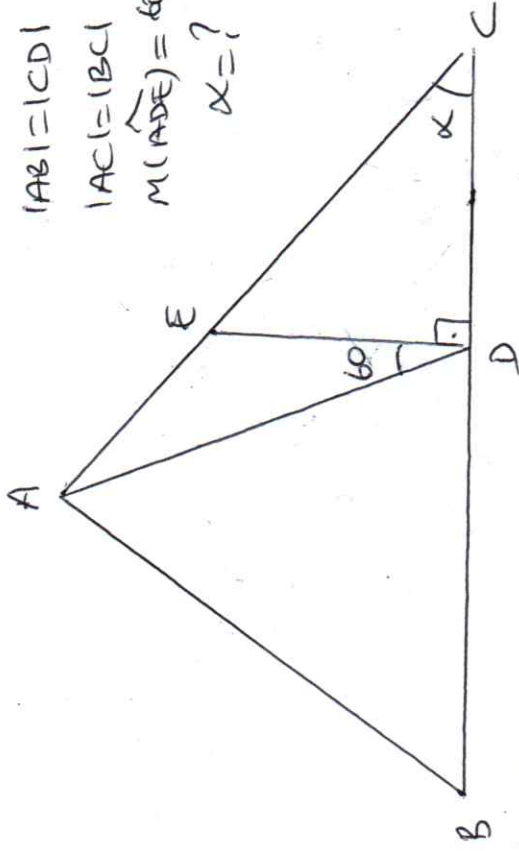
SORU (1) :

ABC
Eşkenar üçgen
|BD| = 5 br
|AE| = |FC|
∠(ABC) = ?



SORU (2) :

[ED] ⊥ [DC]
|AB| = |CD|
|AC| = |BC|
m(∠ADE) = 60°
x = ?



SORU (3) :

[AE] : açıortay
m(∠DEA) = 45°
|BE| = 10 br
|CF| = 2 br
[AC] ⊥ [BC]
|KL| = x = ?

