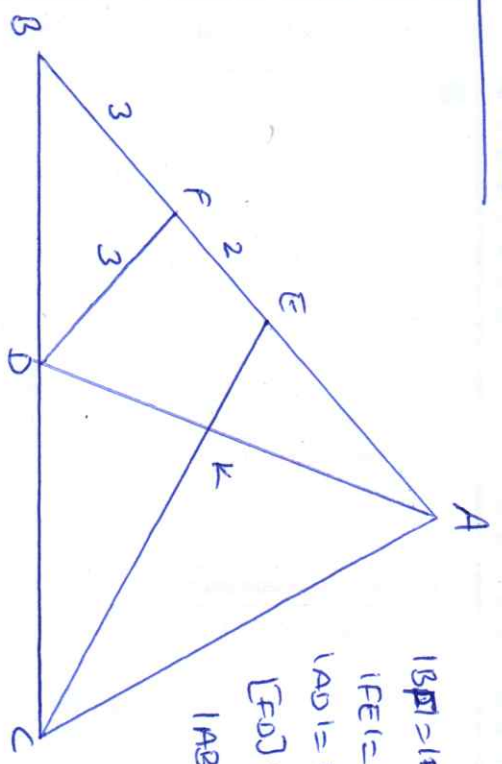
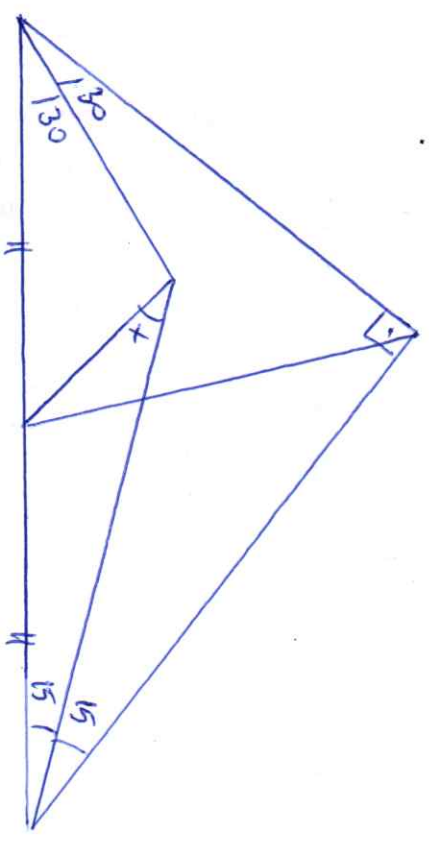


Solu 1:



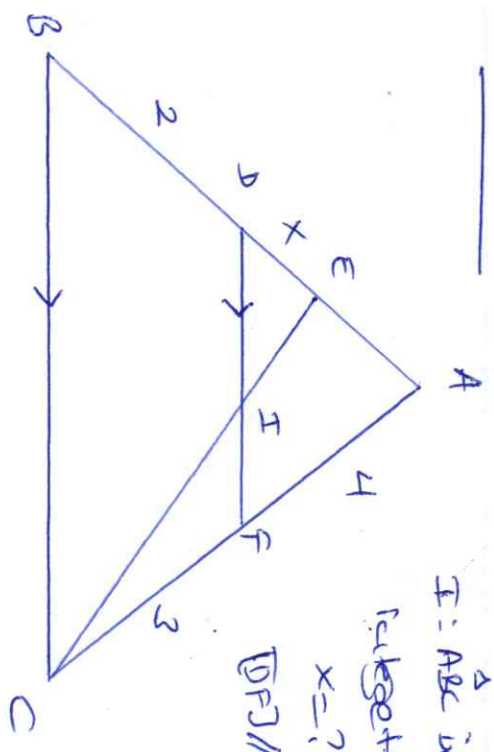
$|BE| = |ED| = 3$   
 $|FE| = 2$  or  
 $|AD| = |AC|$   
 $[FD] \parallel [EC]$   
 $|AB| = ?$

Solu 3:



$x = ?$

Solu 2:



$I = \Delta ABC$  incenter  
 $[DF] \parallel [BC]$   
 $x = ?$

$\Delta$