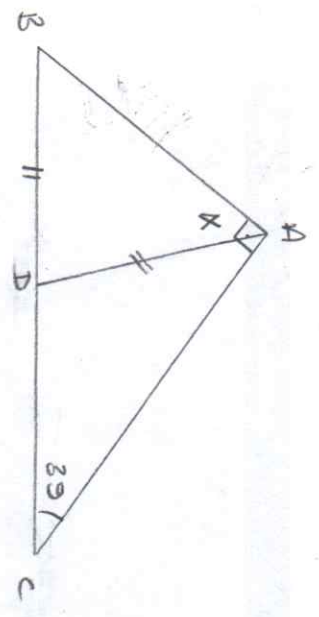
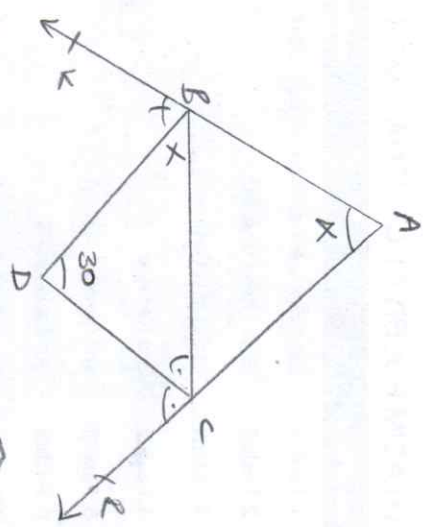


① Bilgi sorusu



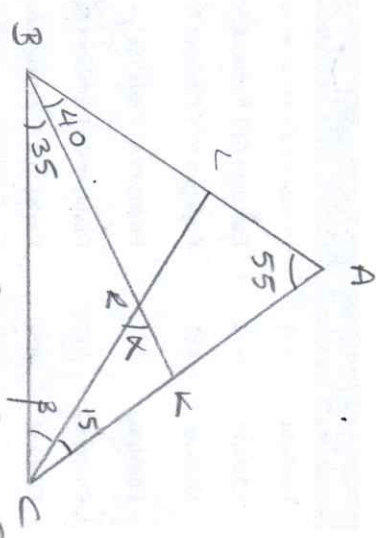
$[AB] \perp [AC] \Rightarrow |BD| = |AD|$
 $m(\widehat{ACB}) = 39^\circ, m(\widehat{BAD}) = x = ?$

② Temel soru Bilgi sorusu



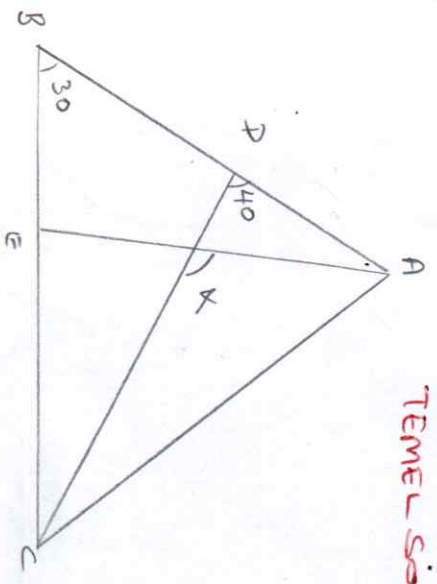
$m(\widehat{BDC}) = m(\widehat{DBE})$ ve $m(\widehat{BCD}) = m(\widehat{DCE})$
 $m(\widehat{BDC}) = 30^\circ \Rightarrow m(\widehat{CAE}) = x = ?$

③ Temel soru



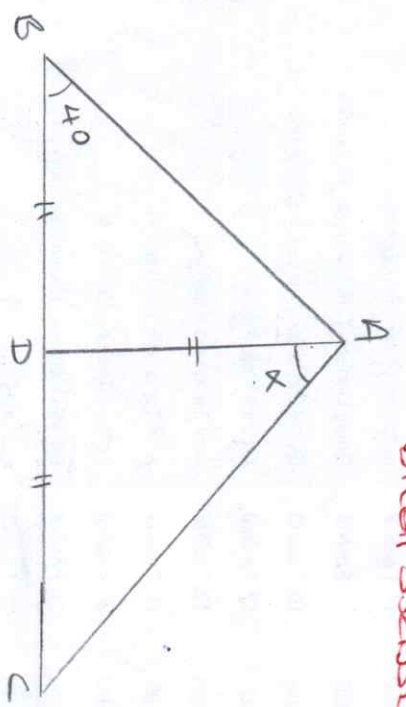
$m(\widehat{BAC}) = 55^\circ, m(\widehat{ABK}) = 40^\circ, m(\widehat{BLC}) = 35^\circ$
 $m(\widehat{ACB}) = 15^\circ, m(\widehat{KBC}) = x, m(\widehat{LCB}) = \beta$
 $\frac{x}{\beta} = ?$

④ Bilgi sorusu Temel soru



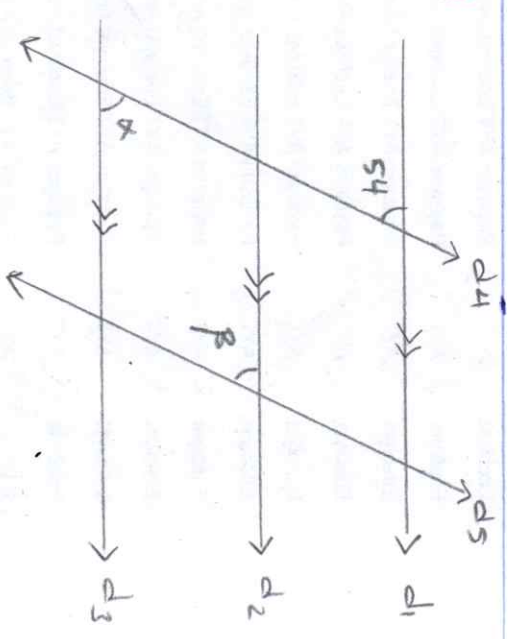
$m(\widehat{BAC}) = 30^\circ, m(\widehat{ADC}) = 40^\circ$
 $|AD| = |EC|$ ve $|BD| = |BE|$

⑤ Temel soru Bilgi sorusu



$|AD| = |BD| = |CD|$ ve $m(\widehat{ABD}) = 40^\circ$
 $m(\widehat{DAC}) = x = ?$

⑥ Temel soru

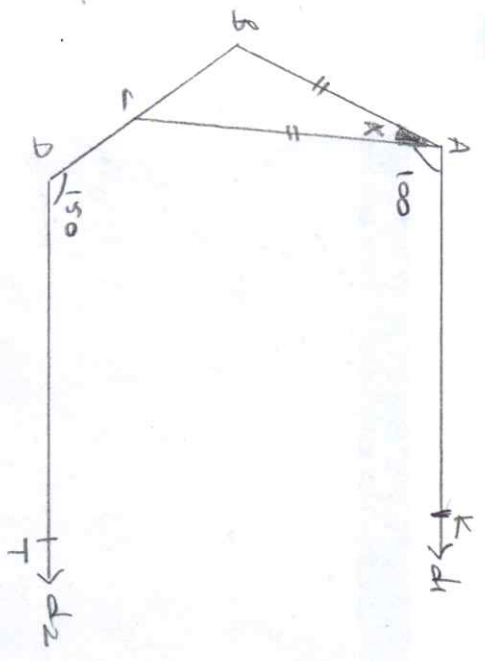


$d_1 \parallel d_2 \parallel d_3$ ve $d_4 \parallel d_5$
 $\beta - \alpha = ?$

AQUAR

7

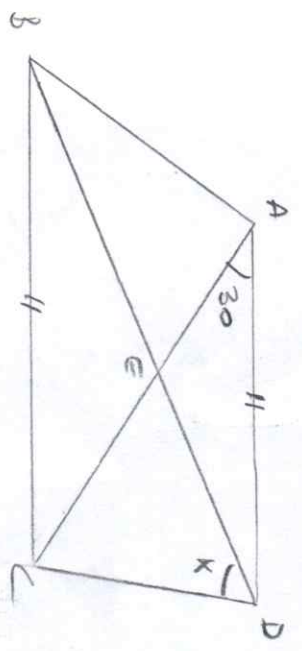
TEMEL SORU



$d_1 \parallel d_2 \Rightarrow m(\widehat{CAE}) = 100$ ve
 $m(\widehat{CDT}) = 150$, $|AB| = |AC|$, $m(\widehat{BAC}) = ?$

10

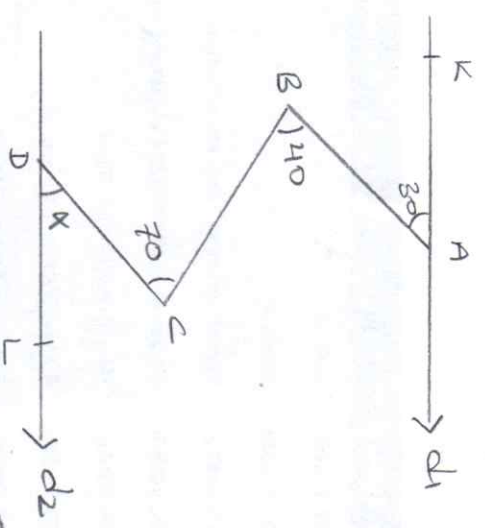
TEMEL SORU



ABC eşkenar üçgen, $|AD| = |BC|$
 $m(\widehat{DAC}) = 30^\circ$, $m(\widehat{BDC}) = \alpha = ?$

8

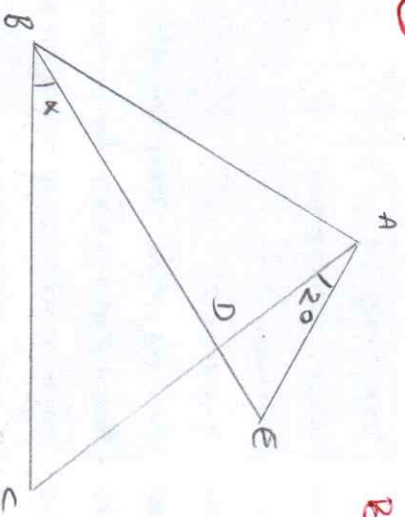
TEMEL SORU



$d_1 \parallel d_2 \Rightarrow m(\widehat{CAB}) = 30$, $m(\widehat{ABC}) = 40$
 $m(\widehat{BCD}) = 70$; $m(\widehat{CDL}) = ?$

11

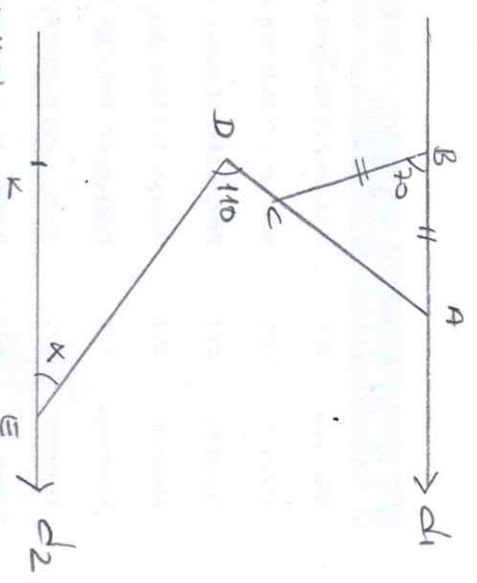
TEMEL SORU
BİLGİ SORUSU



$|AB| = |BD| = |BC|$, $m(\widehat{CAE}) = 20^\circ$
 $m(\widehat{EBC}) = \alpha = ?$

9

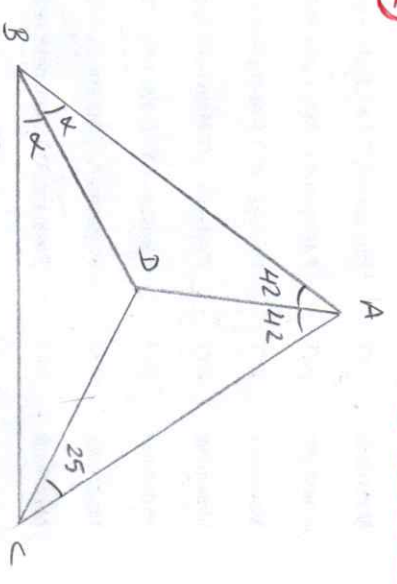
TEMEL SORU



$d_1 \parallel d_2$
 $|AB| = |BC|$, $m(\widehat{ADE}) = 110$, $m(\widehat{ABC}) = 70$
 $m(\widehat{DCE}) = \alpha = ?$

12

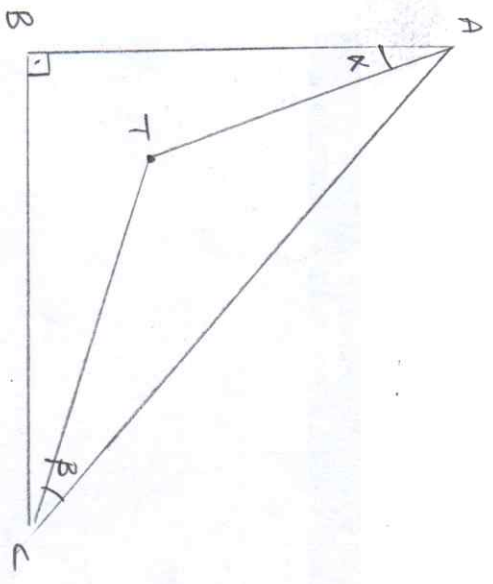
BİLGİ SORUSU



$m(\widehat{BAD}) = m(\widehat{DAC}) = 42$, $m(\widehat{ACD}) = 25$
 $m(\widehat{AED}) = m(\widehat{BEC}) = \alpha = ?$

AQILAR

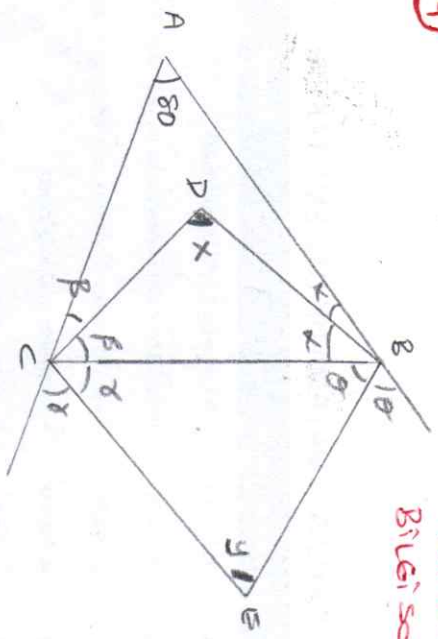
13



T noktası içteğet çemberinin merkezisi
 $m(\widehat{BAT}) + m(\widehat{ACT}) = \alpha + \beta = ?$

BİLEĞİ SÖZÜSÜ

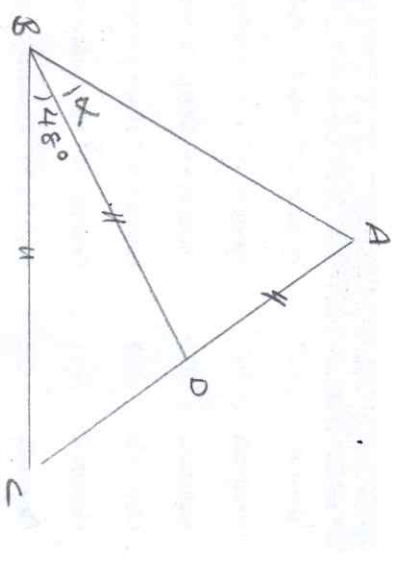
14



Şekildeki üçgenler verilmistir.
 $m(\widehat{BAC}) = 80^\circ$; $m(\widehat{BCD}) - m(\widehat{BEC}) = x - y$?

TEMEL SÖZÜ BİLEĞİ SÖZÜSÜ

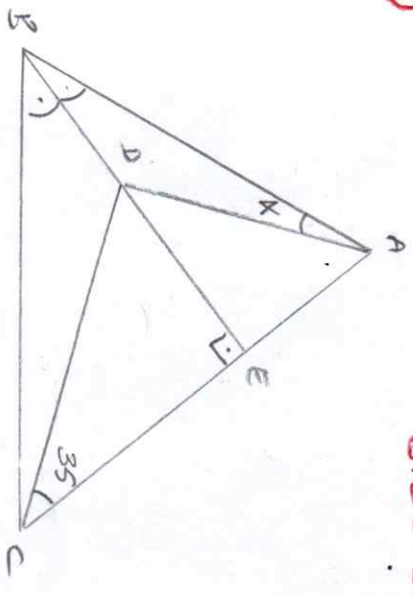
15



$|AD| = |BD| = |BC|$, $m(\widehat{BAC}) = 48^\circ$
 $m(\widehat{ABD}) = \alpha = ?$

TEMEL SÖZÜ

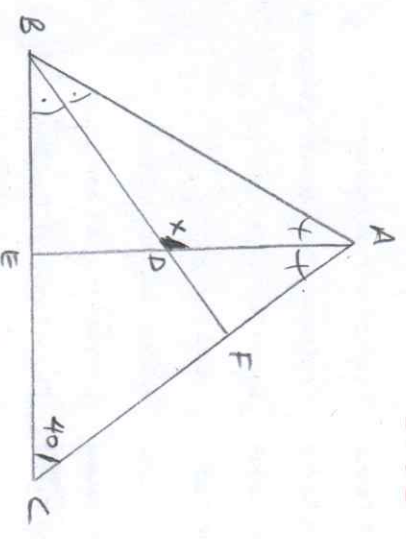
16



ABC eşkenar üçgen, $m(\widehat{ACD}) = 35^\circ$
 $[BE] \perp [AC]$, $m(\widehat{BAE}) = m(\widehat{EBC})$
 $m(\widehat{EAD}) = \alpha = ?$

BİLEĞİ SÖZÜSÜ

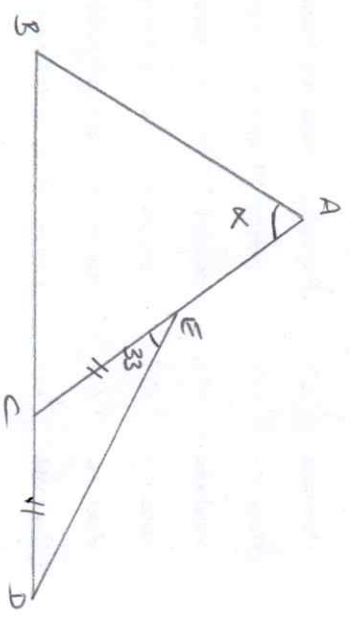
17



$m(\widehat{ACB}) = 40^\circ$, $m(\widehat{BAE}) = m(\widehat{EC})$
 $m(\widehat{ABE}) = m(\widehat{EBC})$; $m(\widehat{ADB}) = x = ?$

TEMEL SÖZÜ BİLEĞİ SÖZÜSÜ

18



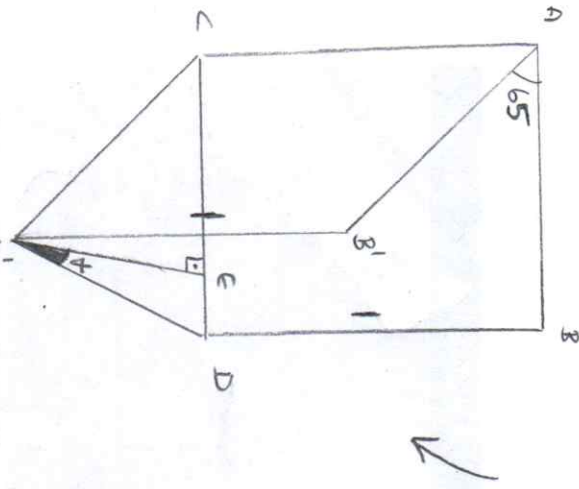
$|AB| = |AC|$, $|CE| = |DC|$, $m(\widehat{CED}) = 33^\circ$
 $m(\widehat{BAC}) = \alpha = ?$

TEMEL SÖZÜ

AGIYLA

19

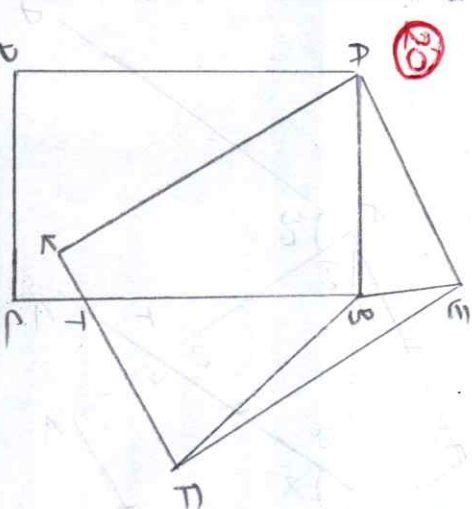
TEMEL SORU



Solukdatı kapı olgünde 65° alıyor
 Kapının durumu için bir engel $[CE']$ kama
 diki olarak gösteriliyor. $([ED] \perp [CD])$, $\alpha = ?$

20

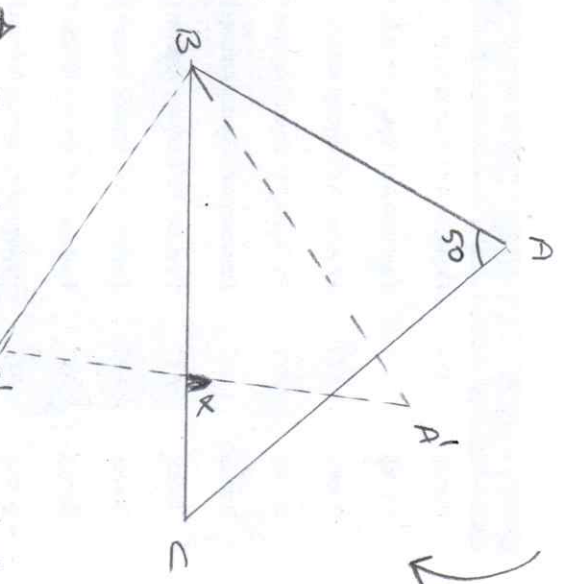
TEMEL SORU



ABCD ve AEFK dikdörtgenleri eşittir
 A köşeleri çakışık şekilde gösteriliyor
 $|AE| = |BF| \Rightarrow m(\widehat{D\hat{A}C}) = 60^\circ$
 $m(\widehat{TB\hat{F}}) = \alpha = ?$

21

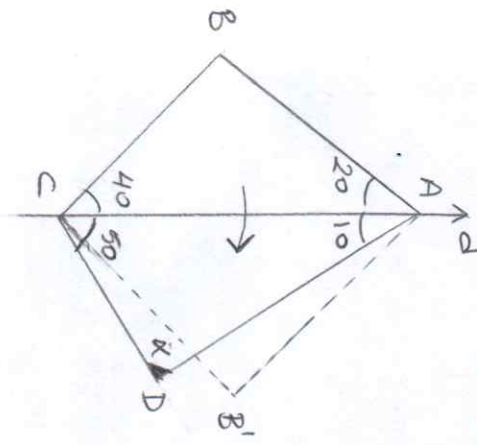
TEMEL SORU



A BC üçgeni B köşesi sabit tutuldu
 olgünde 30° döndürüyor
 $m(\widehat{BAC}) = 50^\circ$ ve $m(\widehat{ABC}) = 40^\circ$; $\alpha = ?$

22

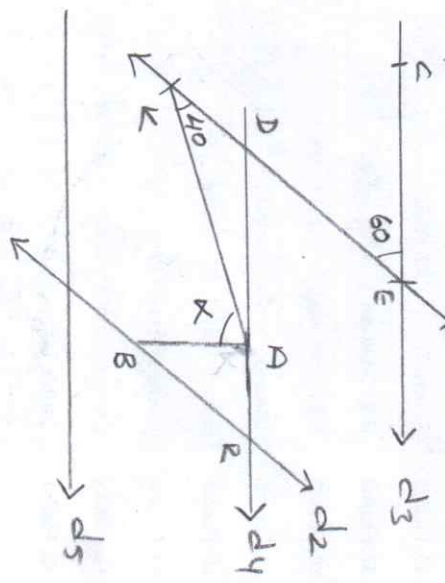
TEMEL SORU



ABC üçgeni d doğrusu boyunca
 bölünmüş ABC üçgeni oluşuyor.
 $m(\widehat{BAC}) = 2m(\widehat{CAD}) = 20^\circ$, $m(\widehat{BCA}) = 40^\circ$
 $m(\widehat{ACD}) = 50^\circ$; $m(\widehat{CD\hat{A}}) = \alpha = ?$

23

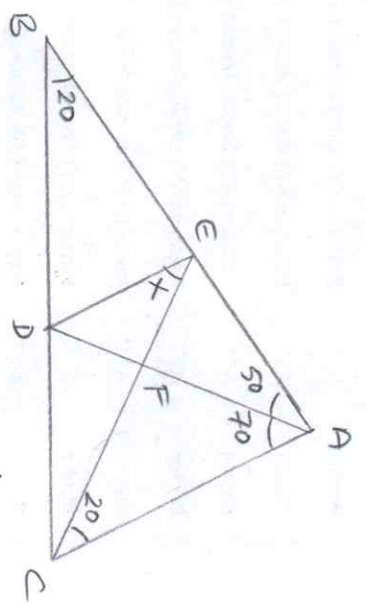
TEMEL SORU



$d_1 \parallel d_2$ ve $d_3 \parallel d_4 \parallel d_5$
 $[AB] \perp d_3$; $m(\widehat{CED}) = 60^\circ$ ve
 $m(\widehat{DEA}) = 40^\circ$; $m(\widehat{BA\hat{K}}) = \alpha = ?$

24

BİLGİ SORUSU



$m(\widehat{BAC}) = m(\widehat{ACE}) = 20^\circ$
 $m(\widehat{EAD}) = 50^\circ$ ve $m(\widehat{DAC}) = 70^\circ$
 $m(\widehat{DEC}) = \alpha = ?$

AGIILAR